

Trend task

Ana's Savings

Approach: Independent

Level: Year 4 only

Focus: Completing a line graph.

Resources: None

Questions/instructions:

Ana is saving money.

This is how much she had saved by the end of each month:

January \$3

February \$5

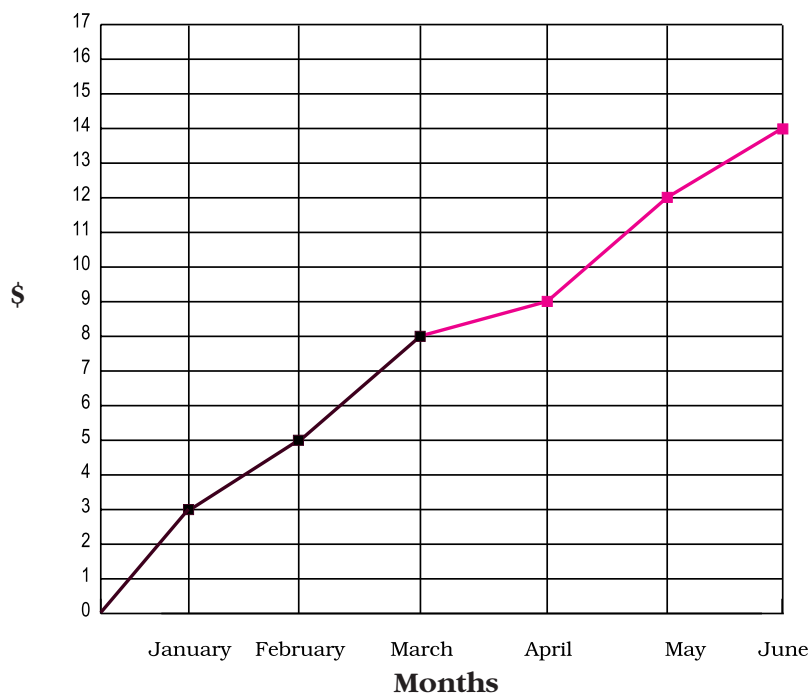
March \$8

April \$9

May \$12

June \$14

Finish the graph to show Ana's savings each month.



% responses
1999 ('95)
year 4

April, \$9 62(58)

May, \$12 59(58)

June, \$14 58(56)

all points connected with lines 84(85)

Commentary:

There was no significant change between 1995 and 1999 in completion of this task by year 4 students.