

TREND TASK



House Plan

Approach: Station

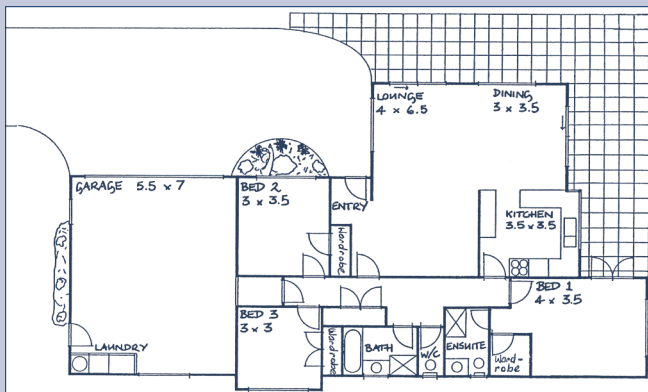
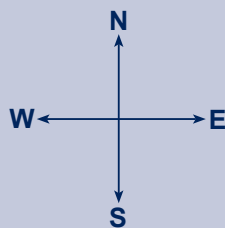
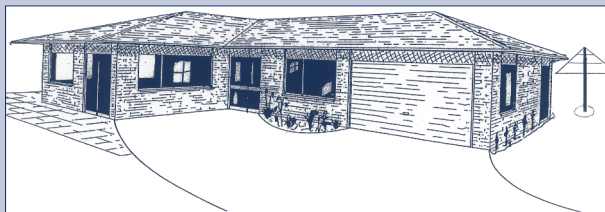
Focus: Interpreting a plan.

Resources: Pictures in answer booklet.

Level: Year 8

Questions/instructions:

Look at the picture and plan of the house then answer the questions.



% responses  
2002 ('98)  
**year 8**

1. Put a cross on the **plan** to show the front door.

correct

76 (79)

2. How many bedrooms are there? **3**

99 (96)

3. Which room has the biggest wardrobe?

bedroom 1, bed 1  
(4 x 3.5, rm 1)

92 (90)

4. Draw a line on the plan to show the shortest way from the laundry to the lounge.

correct

73 (69)

5. What direction are you facing when you are in the kitchen looking out to the dining area?

North

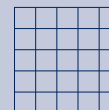
84 (82)

6. There is a clothes line beside the house. Draw the clothes line in the right place on the **plan**.

drawn in appropriate region

53 (49)

7. The person who drew the plan has not labelled the part shown like this. What is it?



sundeck, patio, tiled area, etc

[Not marked. Many students noted the materials used rather than the function of the area]

Commentary:

Year 8 students performed similarly on this task in 1998 and 2002.