

Shortland Street

Approach: One to one

Level: Year 8 only

Resources: Videotape with two short clips from *Shortland Street* episodes, without sound.
(Shortland Street is a half hour, every weeknight hospital drama.)

Questions/instructions

In this activity you will be watching a video which shows two short clips from the *Shortland Street* series. The video has no sound track. I want you to look at the people and work out from their body language how you think they are feeling.

Let's watch the first clip now, where Lionel is talking to Rachel.

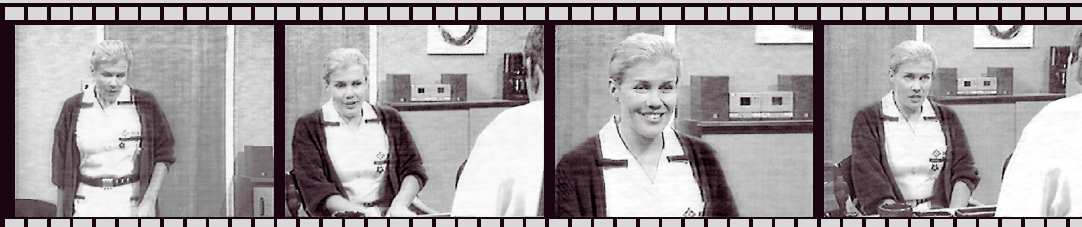
Show part 1 of the video



- | | | |
|------------------------------------------------------|--------------------------------------------|----|
| 1. What emotions or feelings is Lionel showing here? | anger or equivalent | 99 |
| 2. How is Lionel showing those emotions? | aggressive expression and pointed finger | 89 |
| | body position | 25 |
| | final look with lowered brow | 10 |
| | Overall explanation: clear and full | 2 |
| | some appropriate details | 39 |
| | minimal response | 59 |
| 3. What could have caused him to feel like that? | sensible response | 95 |

Now let's watch the second clip. In this clip Ellen is talking to her boss, David.

Show part 2 of the video



- | | | |
|-----------------------------------------------------|--------------------------------------------|----|
| 4. What emotions or feelings is Ellen showing here? | anxiety, diffidence or equivalent | 76 |
| 5. How is Ellen showing those emotions? | cautious approach | 31 |
| | forward on seat | 14 |
| | talking without eye contact | 4 |
| | smoothing clothes | 12 |
| | Overall explanation: clear and full | 1 |
| | some appropriate details | 22 |
| | minimal response | 77 |
| 6. What could have caused her to feel like that? | sensible response | 83 |

Commentary

This year 8 task focusing on nonverbal communication was a video parallel to *Feelings* (p31) a still picture task for year 4 students. The year 8 students were very successful in identifying the emotions displayed, but much less successful in giving details of the signs of those emotions. Their success with questions 3 and 6 often drew on extensive watching of *Shortland Street*!

% responses
year 8