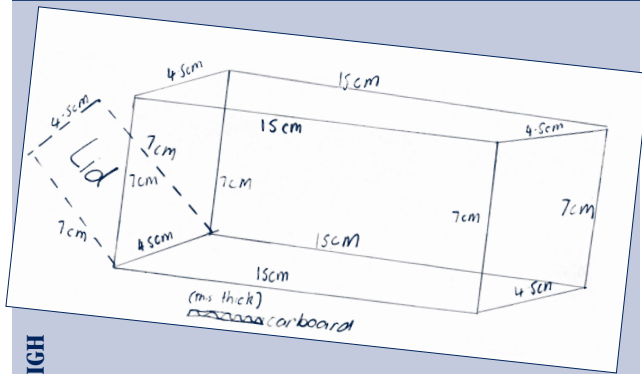
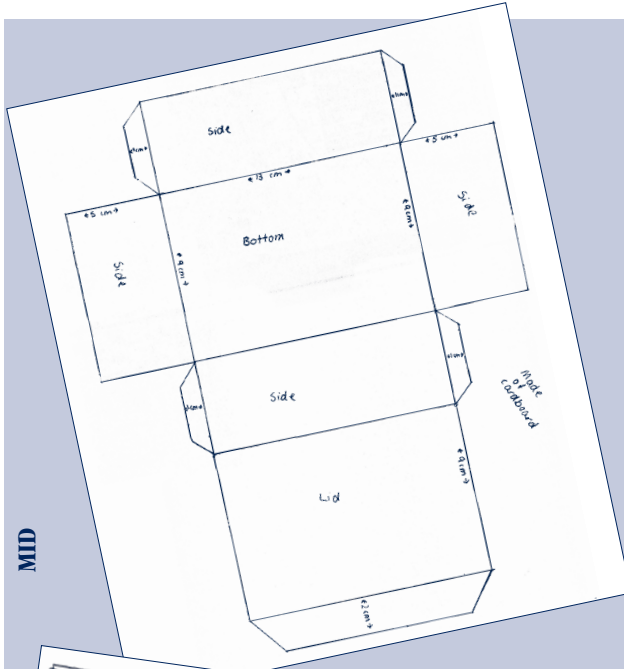
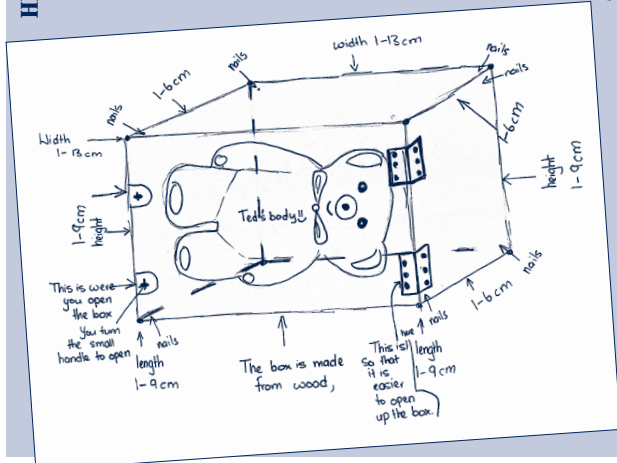


Te Pouaka Pea — Bear Box continued



HIGH



MID



He Mahinga Rōpere

Approach: One to one**Focus:** Choice of materials to suit particular purpose.**Resources:** 5 types of cover material, 6 types of fastener, sample of frame material, photo, plan of frame.**Questions/instructions**

In this activity you will be thinking about the best way to protect a strawberry garden from birds.

Mō tēnei mahi, ka whakaaro ake koe, mō tētahi huarahi pai rawa, hei ārai atu i ngā manu i te māra rōpere.

Here is a picture of a strawberry patch.

Anei tētahi whakaahua mahinga rōpere.



Show student the photo.

1. There is a problem. Birds keep on eating the nice, juicy straw-berries. How do you think the problem could be fixed?

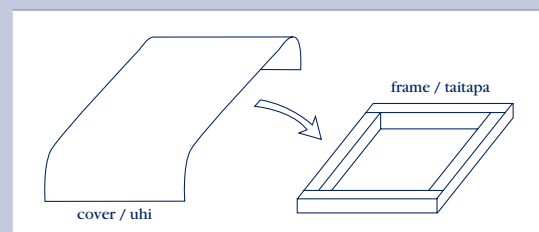
He raruraru. Kei te kainga tonutia ngā rōpere tino reka nei e ngā manu. Ki ōu whakaaro, me ahatia tēnei raruraru kia tika ai?

Pause for answer.

One idea for fixing the problem is to put a cover on a frame, then put the covered frame over the strawberry patch. Here is a plan of a frame to help you think about that idea.

Ko tētahi whakaaro hei whakatika i tēnei raruraru, kia whakatakoto he uhi ki runga i tētahi taitapa [frame]. Kātahi, ka whakatakoto taua taitapa uhi ki runga i te mahinga rōpere. Anei tētahi hoahoa o tētahi taitapa hei whakaarotanga māu.

Show student the plan.



Here are some materials that could be used for the cover on the frame.

Anei ētahi momo uhi tērā pea, he pai hei uhi taitapa.

Give student the possible covers.

He Mahinga Rōpere — Strawberry Patch



2. Which material do you think is the most suitable one to use?

Ki ōu whakaaro ko tēhea te mea pai rawa?

	% responses	
	GE	MI
fine plastic netting, 3cm holes	9	6
black polythene sheet	8	14
windbreak cloth	39	37
plastic netting, 5cm holes	5	0
chicken wire, 1cm holes	39	43

3. Why would that material be the best to use?

He aha ai?

	% responses	
	GE	MI
unable to be penetrated by birds	80	84
size of mesh	22	28
allows sun through	19	14
allows moisture through	14	16
creates good conditions for growth	2	10
easy to work with		

Give student the wood.

The plan shows that the cover needs to be attached to some pieces of wood.

E whakaatu mai ana te hoahoa, me whakamau rawa te uhi, ki ētahi pito rākau.

Give student the fasteners.

Here are some things that could be used to attach the material to the wood.

Anei ētahi mea hei hononga mō te uhi ki ngā rākau.

4. What do you think would be best for attaching the cover to the wood?

Ko tēhea te mea pai rawa, hei hononga mō te uhi ki ngā rākau?

	% responses	
	GE	MI
glue	5	2
nails	25	21
PVC insulation tape	1	2
drawing pins	1	0
wire staples	61	67
polypropylene string	7	8

5. How would you use this fastening (or these fastenings) to attach the cover to the wood?

Me pēhea te whakamahi o tēnei/ēnei taputapu whakamau, hei hononga mō te uhi ki ngā rākau?

6. Explain why you think that would be the best way to attach the net to the wood.

Whakamāramatia mai nā te aha i kī ai koe koinā te āhuatanga pai rawa atu, hei hononga mō te uhi ki ngā rākau.

responses to 5 & 6
practicality, durability

	% responses	
	GE	MI
strong	12	22
moderate	35	49
weak	51	27
none	2	2

Commentary:

Māori students in Māori immersion (MI) settings scored statistically significantly higher than did Māori students in general education (GE) settings. The responses to questions 5 and 6 were the main factors in this difference.