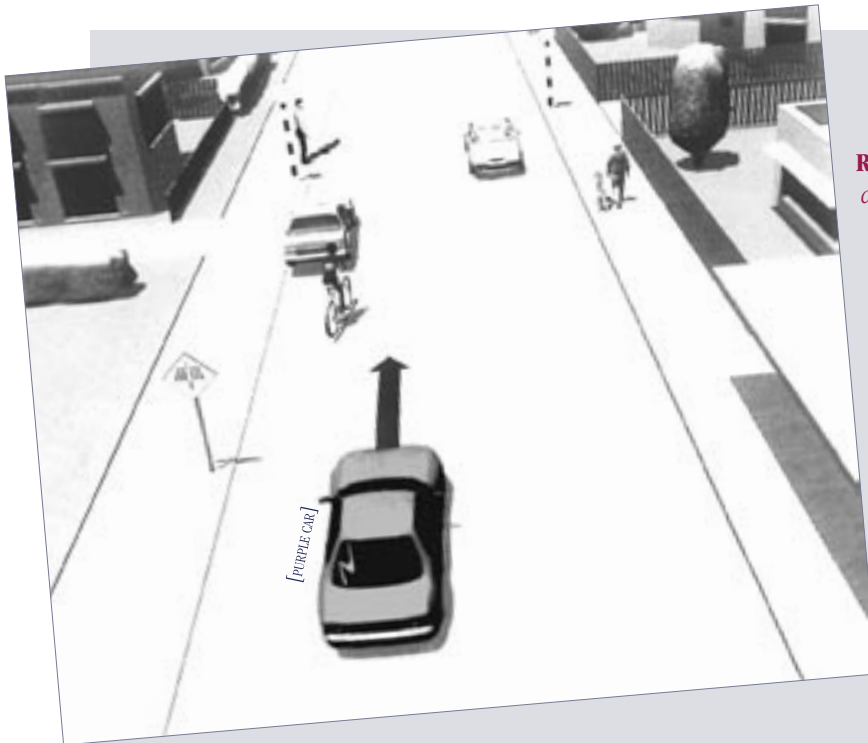


## E Tū - Titiro - Whakaaro — Stop - Look - Think

**Approach:** One to one

**Focus:** Interpreting visual information.

**Resources:** Road traffic picture.



### Questions/instructions

Show the student the picture.

I want you to have a careful look at this picture to see what is happening, and to think about what might happen next.

1. Tell me what is happening in the picture.
2. Try to explain what you think might happen next.
3. What do you think are the risks for the person on the bike?

Whakaaturia te pikitia ki te ākonga.

Āta tirohia tēnei pikitia, kia kite koe i ngā āhuratanga, ā, ka whakaaro ai, he aha rā ngā āhuratanga a muri atu.

1. Tirohia te pikitia. Kōrero mai, kei te aha?
2. Nā. Kōrero mai, ka aha rā a muri atu?
3. He aha ngā raruraru, tērā pea, ka pā ki te tangata eke paihikara?

### Risks:

*considering responses to all 3 questions*

	% responses	
	GEd	MI
cyclist getting hit by purple car when passing parked car or squeezed between both	74	64
door of parked car opening and hitting cyclist	3	0
parked car pulling out and crashing into cyclist	3	2
cyclist hitting pedestrian on crossing	17	20
cyclist stopping for pedestrian on crossing, getting hit from rear by purple car	2	7
dog chasing cyclist	1	7
cyclist hit by oncoming car	3	4
cyclist falling off bike	4	60
cyclist may not be wearing helmet	13	0
vague comment about cyclist getting hit or run over	19	16
<b>Total score:</b>	4-10	0 4
	3	4 20
	2	36 43
	1	55 17
	0	5 16

### Commentary

Statistical comparisons are not appropriate on this task because the markers for students in Māori immersion (MI) settings gave credit for the response "cyclist falling off bike" on a different basis to other markers. Otherwise, differences were small.