

# Task: Hei Oranga mō te Pūngāwerewere — Animal Adaptation – Spider

Approach: Station

Focus: Animal adaptation

Resources: Picture in recording book

Kupu:

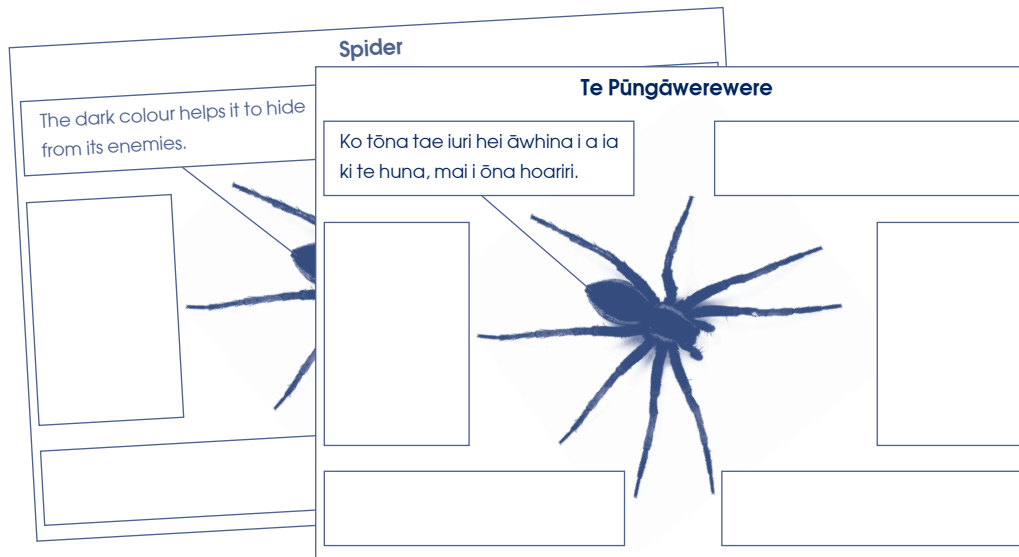
## Questions / instructions:

Āta titiro ki te pikitia. Tuhia he kōrero mō ngā āhuatanga o te pūngāwerewere ka āwhina i a ia kia ora tonu.

Kua oti tētahi kōrero hei tauira māu.

Look carefully at the picture. Write about the parts of the spider that help it to survive.

An example has been done for you.



	% responses		% responses
legs for moving	77		
disposable leg parts for escape	0		
fur/hairs on legs/body to sense movement	4		
special leg tips with secretions to walk on web/water	0		
spinneret (source of web material)	34		
mouth to eat	21		
fang to poison/paralyse prey	34	<b>Total Score:</b>	5
eyes (special) to see prey/enemies	52		4
colour pattern on body for warning/protection	6		3
abdomen to carry eggs/babies	4		2
spikes/barbs on legs/body to defend against enemies	6		1
			0
			11

## Commentary:

A majority of the students labelled less than three features of the spider appropriately.