

Trend Task:

Work It Out (Y8)

Approach:	One to one	Year:	8
Focus:	Computation strategies		
Resources:	Card		

Questions / instructions:

Hand card to student.

This card tells you that 54 times 6 is 324.
Use this fact to work out 56 times 6.

- Tell me what you think the answer is.
- Now tell me how you worked it out.
PROMPT: Can you explain that a bit more to me?

336

$$54 \times 6 = 324$$

$$56 \times 6 = \square$$

% response
2009 ('05)

year 8

70 (63)

- explanation show understanding that the answer must be 2 lots of six (12) more than 324
- another valid strategy that made use of information that $54 \times 6 = 324$
- tried to directly calculate 56×6 (i.e. did not make use of $54 \times 6 = 324$)
- any other response, including unclear explanation

Total Score:	4
	3
	2
	1
	0

% response
2009 ('05)

year 8

56 (42)

5 (10)

14 (18)

25 (30)

52 (39)

8 (7)

13 (20)

5 (9)

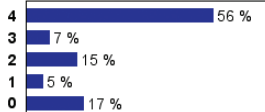
22 (25)

Subgroup Analyses:

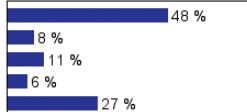
Year 8

Score
Range

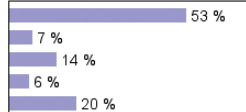
Boys



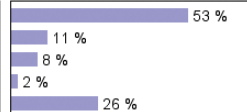
Girls



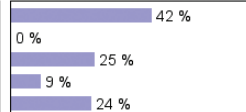
Pakeha



Māori



Pasifika



Commentary:

Between 2005 and 2009, the percentage of year 8 students using an efficient number strategy to solve this task increased substantially, leading to a smaller rise in success with the task. Boys did a little better than girls, on average, with only small differences between Pakeha, Māori and Pasifika students.