

Task: On Sale

Approach: Independent
Focus: Calculating percentage
Resources: Answer booklet

Year: 8

Questions / instructions:

A toyshop is having a sale.

Write down how much is taken off the old price. Then write down the new sale price.

Example: Car 10% off \$7.00



Savings: 70 cents
Sale price: \$6.30

[NOTE: When scoring results for the sale price, the student's answer for savings was used, whether it was correct or not.]

1. Action figure 10% off \$17.50



Savings: \$1.75
1.75 / 175 cents
Sale price: correct sale price
(e.g. \$17.50 - \$1.75 = \$15.75)

2. Lego 20% off \$15.00



Savings: \$3.00
3.00 / 300 cents
Sale price: correct sale price
(e.g. \$15.00 - \$3.00 = \$12.00)

3. Soft toy 25% off \$20.00



Savings: \$5.00
5.00 / 500 cents
Sale price: correct sale price
(e.g. \$20.00 - \$5.00 = \$15.00)

4. Sport set 50% off \$25.00



Savings: \$12.50
12.50 / 1250 cents
Sale price: correct sale price
(e.g. \$25.00 - \$12.50 = \$12.50)

5. Dress up 12.5% off \$24.00



Savings: \$3.00
3.00 / 300 cents
Sale price: correct sale price
(e.g. \$24.00 - \$3.00 = \$21.00)

Total Score: 14-15
10-13
6-9
2-5
0-1

% responses
y8

27

2

51

33

0

58

46

1

63

53

5

64

15

0

40

10

19

22

24

25

Subgroup Analyses:

Year 8

Score Range

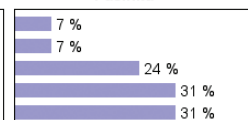
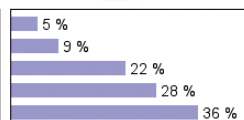
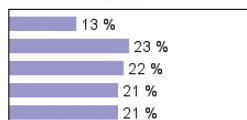
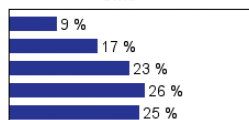
Boys

Girls

Pakeha

Māori

Pasifika



Commentary:

About half of the year 8 students had very limited success (5 or fewer marks out of 15) on this task.