

Approach: Station

Year: 8

Focus: Comprehending literal meaning; analysing and interpreting

Resources: Highlighter

Questions / instructions:

- A. Read the story.
- B. Decide whether each sentence below is a fact or an opinion. **Circle** your answer.
- C. On the story, use the highlighter pen to mark the parts that you said are **facts**.



Banana Story

Overripe bananas aren't much good to eat. But they do make good banana cake and they can be used to help ripen other fruit. Ripe bananas give off a gas called ethylene. This gas makes fruit ripen faster. One way to ripen fruit is to put it in a plastic bag with a banana and seal it. Then the ethylene won't escape into the air. Apples are also good at helping other fruit ripen.

Bananas are very popular in New Zealand. New Zealanders eat more bananas than many other people. Making sure there are enough bananas for New Zealanders to eat is not easy. Bananas grow in warm countries and to get here they need to be put on ships. But the ethylene from bananas can be a problem. One ripe banana could make all the other bananas ripen and rot before they get to New Zealand. So the bananas sent here are completely green and are kept cool on the ship. When they arrive in New Zealand they are kept away from other fruit and in cool storage rooms until they are needed in the shops.

A banana ripener is someone who checks how fast the bananas are ripening. The banana ripener regularly checks to see if any bananas have started to turn yellow. If they have then they are taken away. A few days before the bananas are needed in the shops the banana ripener releases some ethylene gas and the bananas start to go yellow.

		% response 2008 ('04)	year 8		% response 2008 ('04)	year 8
1. You can do only two things with overripe bananas.	opinion	59 (59)		6. Ethylene gas causes bananas to go yellow.		
2. The best way to ripen fruit is to put it with a banana.	opinion	44 (47)		Fact: ("A few days before the bananas are needed in the shops the banana ripener releases some ethylene gas and the bananas start to go yellow.")		
3. Bananas need to be kept cool on the ships.				yes, with correct highlighting		46 (48)
Fact: ("So the bananas sent here are completely green and are kept cool on the ship.")				yes, but without correct highlighting		35 (34)
yes, with correct highlighting		66 (72)				
yes, but with no correct highlighting		20 (17)		Total score:	8-9	32 (32)
4. Bananas and apples release ethylene gas.	fact	80 (82)			7	21 (23)
	opinion	18 (17)			6	18 (24)
5. Being a banana ripener is a hard job.	opinion	84 (84)			5	15 (10)
					0-4	14 (11)

Subgroup Analyses:

Year 8

Score
Range

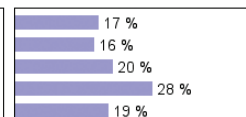
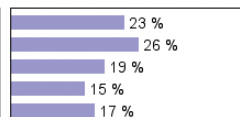
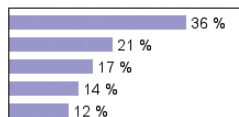
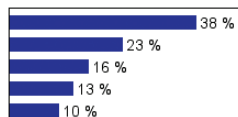
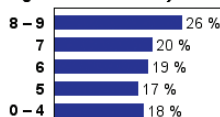
Boys

Girls

Pakeha

Māori

Pasifika



Commentary:

Many year 8 students were not confident in distinguishing facts from opinions. The result was a very wide distribution of marks for all groups, with girls and Pakeha students having markedly more high scores. There were noticeably more low scores in 2008 than in 2004.