

Trend Task:

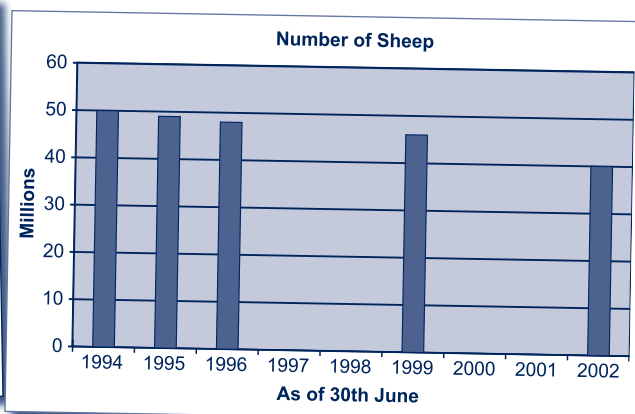
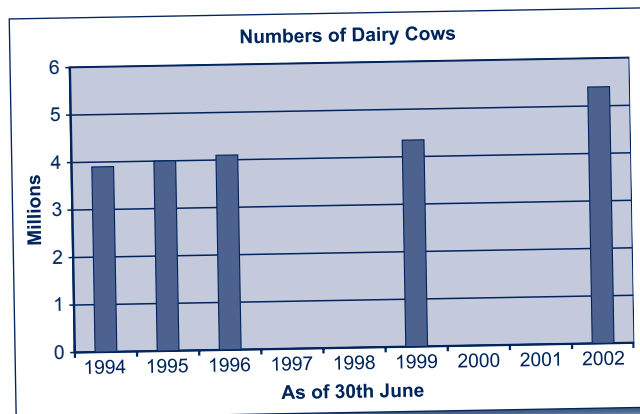
Cows and Sheep

Approach: Station

Year: 8

Focus: Interpreting graphs

Resources: 2 graphs in work book



Questions / instructions:

Look at this graph carefully [*Numbers of Dairy Cows*].

1. Write three facts about dairy cows in New Zealand.

3 correct facts

2 correct facts

1 correct fact

identified that graph shows no cows in some years

Now look at the Cows graph and the Sheep graph.

2. How has farming in New Zealand changed between 1994 and 2002?

used both graphs and recorded a change over time
(cows increased **and** sheep decreased)used one graph and recorded a change over time
(cows increased **or** sheep decreased)

response included an incorrect interpretation

Total score:

6

5

4

3

0-2

% response
2007 ('03)

year 8

24 (21)

26 (35)

23 (20)

23 (26)

22 (31)

41 (37)

20 (19)

11 (14)

20 (23)

14 (15)

22 (21)

33 (27)

Subgroup Analyses:

Year 8

Score
Range

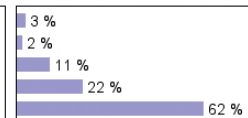
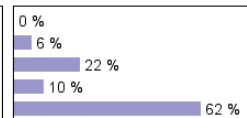
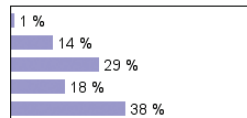
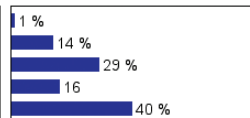
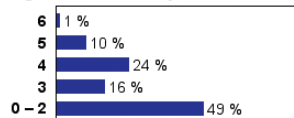
Boys

Girls

Pakeha

Māori

Pasifika



Commentary:

Many year 8 students had some difficulty in interpreting bar graphs where there were gaps in the graph. Performance declined slightly from 2003 to 2007. Pasifika students, in particular, had little success with this task.