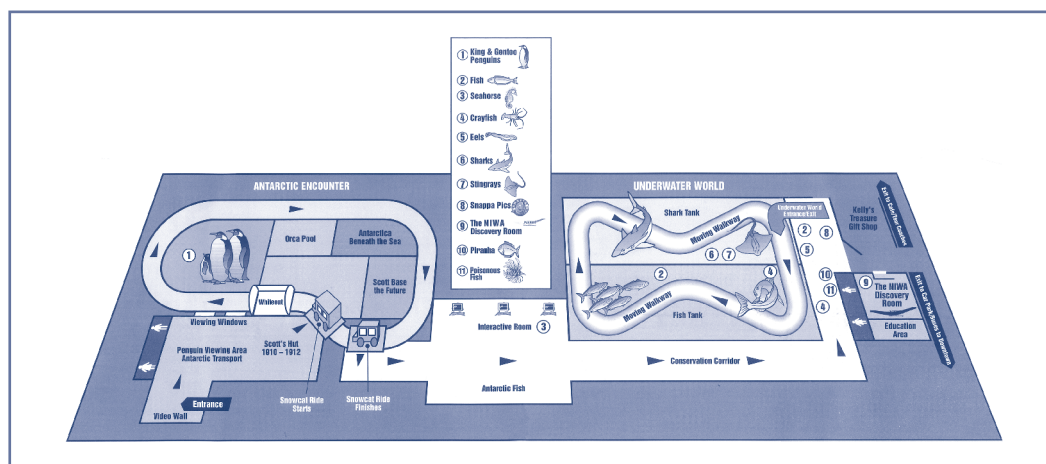


Approach: Station

Year: 4 &amp; 8

Focus: Interpreting a map

Resources: Coloured stickers, map in work book



[Map sourced from: Kelly Tarlton's Antarctic Encounter and Underwater World (2002). Information brochure; Auckland. Kelly Tarlton's]

## Questions / instructions:

This is a map of Kelly Tarlton's Antarctica Encounter and Underwater World.

1. Put the red sticker on the entrance to Kelly Tarlton's.

placed on "Entrance" to Antarctic Encounter  
placed on "Underwater World Entrance/Exit"

2. Put the blue sticker where people get on the Snowcat Ride.

placed on icon, not on words "Snowcat Ride starts"

3. Put the yellow sticker where the Snowcat Ride finishes.

placed on icon, not on words "Snowcat Ride finishes"

% response  
2007 ('03)  
year 4 year 8

85 (86) 95 (97)

2 (3) 2 (2)

61 (62) 89 (87)

62 (63) 89 (89)

4. Follow the arrows. After the Antarctic Encounter, what is in display number 3?

seahorse  
interactive room or antarctic fish  
computers

5. Put a black sticker on the piranha fish display.

placed on display  
placed on key for 10

6. What are two animals you will see in the Underwater World?

[fish, crayfish, eels, sharks, stingrays, piranha, poisonous fish]  
two of these  
one of these

Total score:

8 14 (14) 39 (37)  
7 17 (16) 29 (31)  
6 14 (13) 11 (10)  
5 23 (23) 12 (13)  
0-4 32 (34) 9 (9)

## Subgroup Analyses:

Year 4

Score Range

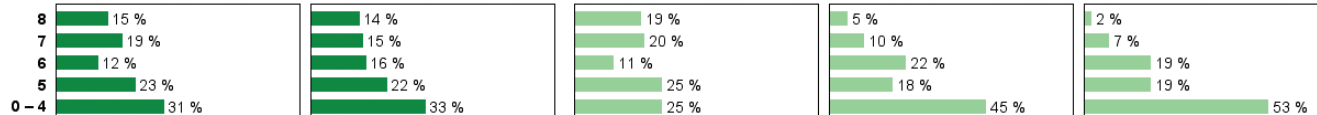
Boys

Girls

Pakeha

Māori

Pasifika



Year 8

Score Range

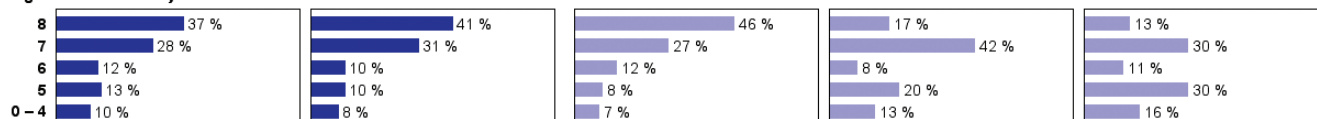
Boys

Girls

Pakeha

Māori

Pasifika



## Commentary:

Students varied considerably in their ability to locate information on a map of an amusement park. While some year 4 and many year 8 students had little difficulty, others could find almost nothing on the map. There was little change in performance from 2003. Boys and girls performed similarly, but many more Pakeha than Māori or Pasifika students enjoyed total success with the task.