

Approach: Station

Year: 4 &amp; 8

Focus: Reading a timetable

Resources: Table in work book

Dunedin to Port Chalmers			
	Dunedin	St Leonards	Port Chalmers
<b>MONDAY TO FRIDAY</b>			
AM	7.20	7.30	7.40
	7.40	7.50	8.00
	8.25	8.35	8.50
Via Totara St	11.30	11.40	11.55
PM	12.45	12.55	1.10
	1.50	2.00	2.15
	3.15	3.25	3.40
Via Totara St	4.00	4.10	4.25
	4.45	4.55	5.10
	6.10	6.20	6.35
	8.15	8.25	8.40

## Questions / instructions:

This is a bus timetable.

1. When is the earliest you can catch a bus from St. Leonards to Port Chalmers?

7.30 am  
7.30

% response 2007 ('03)	
year 4	year 8
13 (15)	54 (62)
37 (40)	30 (25)

2. What time will it get in to Port Chalmers?

7.40 am  
7.40

12 (11)	48 (58)
43 (46)	35 (30)

3. What time does the last bus leave Dunedin?

8.15 pm  
8.15

45 (13)	46 (53)
45 (46)	34 (28)

4. What time will that bus arrive at Port Chalmers?

8.40 pm  
8.40

8 (8)	40 (50)
34 (34)	31 (27)

Total score:

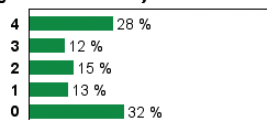
% response 2007 ('03)	
year 4	year 8
4	28 (25)
3	11 (18)
2	16 (18)
1	15 (19)
0	30 (20)

## Subgroup Analyses:

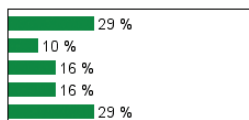
## Year 4

Score  
Range

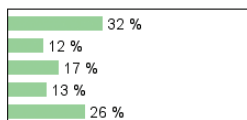
## Boys



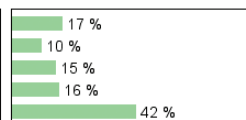
## Girls



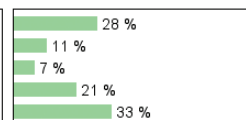
## Pakeha



## Māori



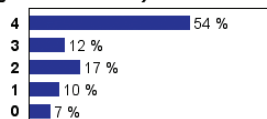
## Pasifika



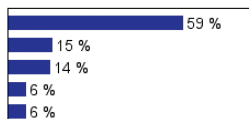
## Year 8

Score  
Range

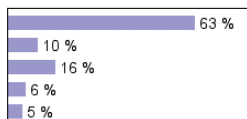
## Boys



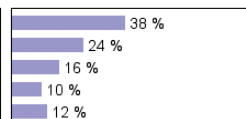
## Girls



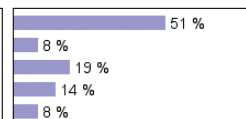
## Pakeha



## Māori



## Pasifika



## Commentary:

Reading a bus schedule was a task handled completely successfully by 56% of year 8 students and 28% of year 4 students. One issue seen consistently was the lack of attention to detail on whether the time was AM or PM. Māori students were less successful than Pakeha or Pasifika students at both year 4 and year 8. There was little change in performance between 2003 and 2007.