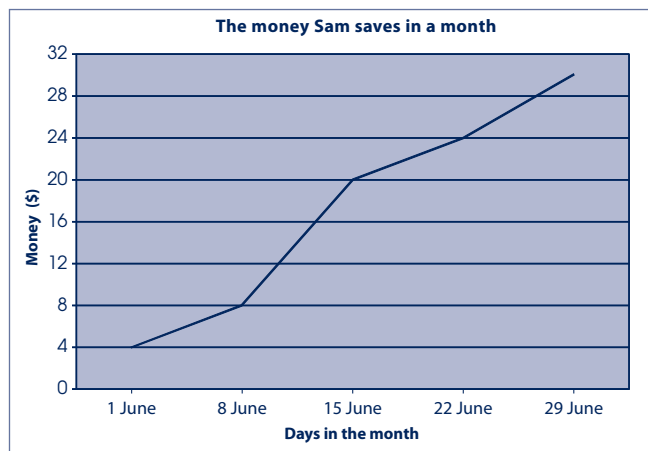


# Trend Task: Sam's Savings

Approach: Station  
 Focus: Interpreting a line graph  
 Resources: Graph in work book

Year: 4 & 8



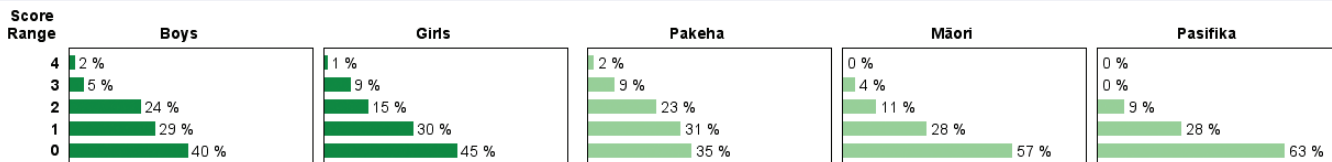
## Questions / instructions:

Sam is saving his money. At the end of each week he draws on his graph how much money he has saved so far.

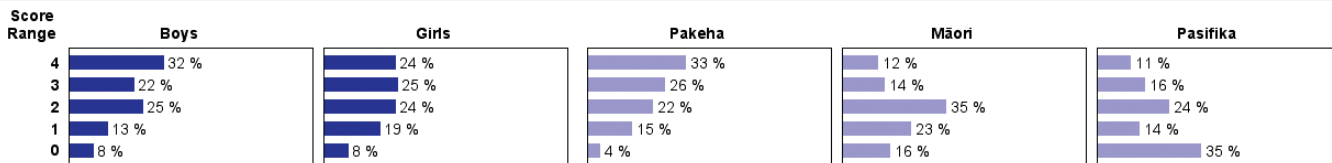
		% response 2007 ('03)	
		year 4	year 8
1.	How much money has he saved by the 29th of June?	\$30 30 29 or \$29	20 (21) 70 (65) 3 (2) 3 (0) 3 (5) 6 (5)
2.	How much money did Sam save between the 1st and the 8th of June?	\$4 4	13 (17) 45 (39) 4 (4) 2 (3)
3.	Sam was given \$8 for his birthday. He saved this money. Between which dates do you think he had his birthday?	8th and 15th June	13 (11) 47 (45)
4.	What will the line on the graph look like if he doesn't save any money next week? Circle your answer.	a. go up b. go down c. be flat	10 (11) 4 (4) 35 (28) 14 (14) 43 (58) 79 (80)
<b>Total score:</b>		4 3 2 1 0	2 (2) 28 (21) 7 (7) 23 (25) 20 (20) 25 (26) 29 (44) 16 (21) 43 (27) 8 (7)

## Subgroup Analyses:

### Year 4



### Year 8



## Commentary:

Year 4 students had great difficulty with this task involving interpreting a line graph. Year 8 students were substantially better, but still not strong. In particular, students had difficulty in working from given information back to the graph. There was little change from 2003.