

Task:

Whakaari Ataata

| | |
|------------|---|
| Approach: | Station |
| Focus: | Logical reasoning and problem solving |
| Resources: | Ngā whakaahua 10; kāri tiwhiri; rākau kāpia |
| Kupu: | whakaari ataata = movie |

Questions / instructions:

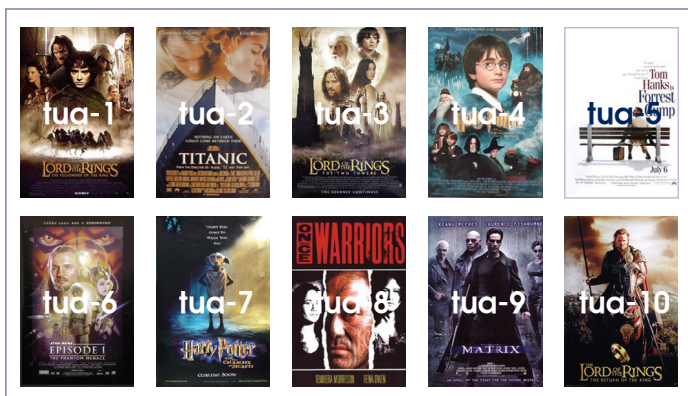
Whakaari Ataata Kāri Tiwhiri

Koia nei ngā whakaari ataata: *Star Wars*, *The Two Towers*, *Once Were Warriors*, *The Fellowship of the Ring*, *The Matrix*, *Harry Potter and the Philosopher's Stone*, *The Return of the King*, *Titanic*, *Forrest Gump* and *Harry Potter and the Chamber of Secrets*.

1. Kei te wāhi tuatoru te whakaari ataata *Two Towers*.
2. Kotahi te wāhi ki mua o *Forrest Gump*, ko *Harry Potter and the Philosopher's Stone*.
3. Ko te whakaari ataata i tino paingia puta noa i Aotearoa, ko *The Fellowship of the Ring*.
4. Kei te wāhi tuawhā, tuarima rānei a *Forrest Gump*.
5. Kei waenganui a *Once Were Warriors* i *The Matrix* me *Harry Potter and the Chamber of Secrets*.
6. Kei tētahi pito o te rārangi ko *The Return of the King*.
7. Ko *Titanic* tētahi o ngā whakaari ataata e rima o runga o te rārangi, engari kāore i te wāhi tuatahi.
8. Kei mua a *Star Wars* i *Harry Potter and the Chamber of Secrets*.



%
response



1. Titiro ki ngā whakaahua o ngā whakaari ataata. Koia rā ngā tino whakaari ataata 10 o ngā tāngata katoa o Aotearoa.
2. Pānuihia ngā kōrero kei runga i te kāri, ka raupapa ai i ngā whakaari ataata.
3. Kia tino tau ō whakaaro ki te raupapa, kātahi ka whakapiri ai i ngā pikitia ki te pepa.

all pictures in correct order
2 pictures in the wrong place

13
8

Commentary:

This task required students to extract information from written statements and apply a strategy of logical reasoning. Most students were not able to do this. Students' ability to read accurately may have constrained their performance in this task.