

# Trend Task: Measurement A (Y4)

Approach: Independent

Focus: Understanding a variety of measurements

Resources: Answer booklet

Year: 4



## Questions / instructions:

Draw hands on the clocks so that they show the same time as the oven clocks.

- 
- 
- 

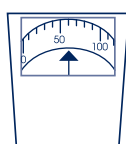
Write numbers on the oven clocks so that they show the same time as the wall clock.

- Morning (a.m.)
- Afternoon (p.m.)

- How many minutes until twenty to three?
- Draw hands on the clock to show 3.00p.m.
- Draw hands on the clock to show 8.30p.m.

- What is the weight shown on this scale?

- A 6 kg  
B 7 kg  
C 51 kg  
D 60 kg



- ✗ C [63 (67)]  
✓ D 28 (26)

% response  
2005 ('01)

year 4

96 (95)

60 (60)

34 (30)

70 (69)

10 (9)

61 (62)

40 18 (22)

90 (91)

65 (64)

✗ C [63 (67)]

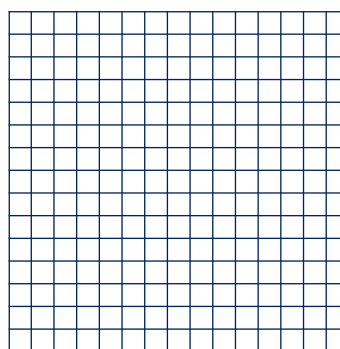
✓ D 28 (26)

- How much do the potatoes weigh?



5 kg  
5

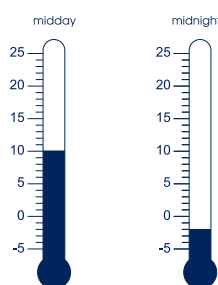
- On the grid below, draw a rectangle with an area of 12 square units.



□ is one square unit

correct

- At midday the thermometer read  $10^{\circ}\text{C}$ . At midnight it read  $-2^{\circ}\text{C}$ . By how many degrees had the temperature dropped?



12

Total score: 11-13

9-10

7-8

5-6

3-4

0-2

% response  
2005 ('01)

year 4

66 (56)

4 (5)

35 (43)

24 (19)

6 (6)

17 (14)

31 (30)

25 (28)

14 (17)

6 (5)

## Commentary:

Year 4 students understood the basics of telling time but had difficulty with 24 hour clocks. They also had difficulty with other measurements. Overall, no change was seen from 2001 to 2005.